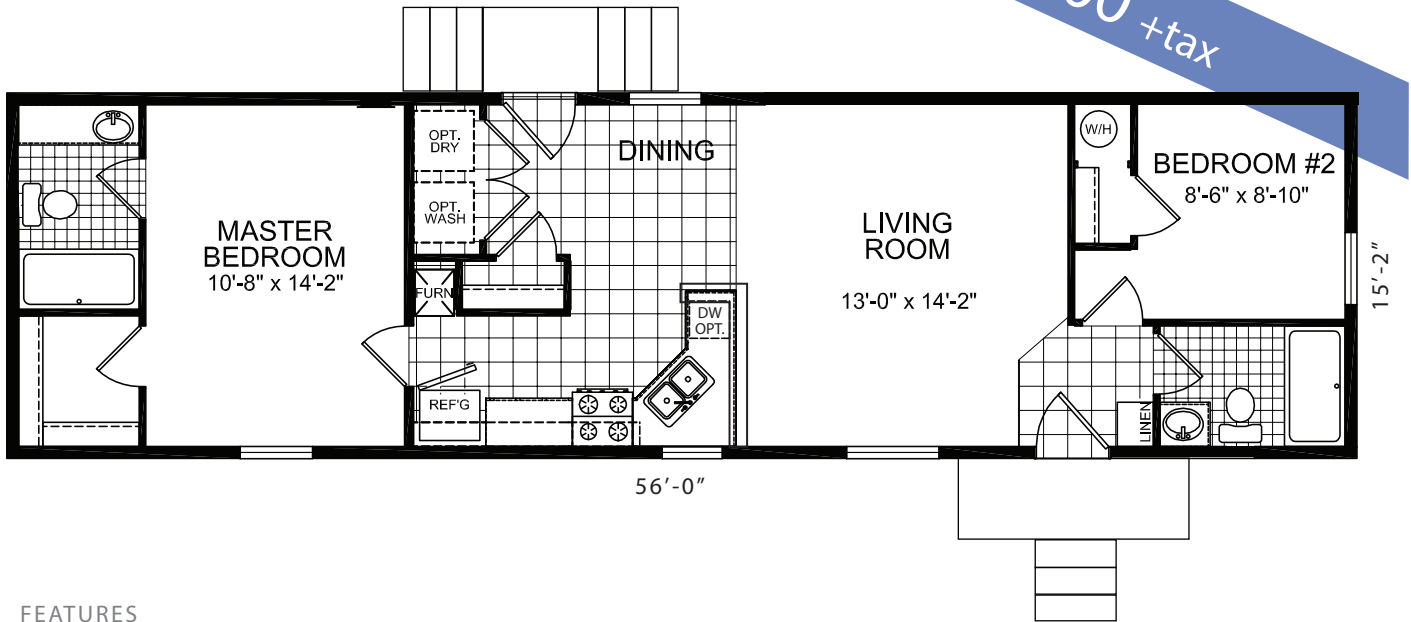


7 LEA LANE

Westcliffe, CO 81252

\$47,500 +tax



FEATURES

- Approx. 850 sq. ft. living
- Two Bedrooms
- Master Walk-in Closet
- Two Baths
- One Piece Tub Showers
- Electric Range
- Refrigerator
- Central Heating
- R-19 Insulated 6" Walls
- R-28 Insulated Ceiling

- Plumbed for Laundry
- Linen Closet
- Exterior Frost-free Tap
- Exterior 110VAC outlet
- Painted Steps & Porch
- 8' x 8' Garden Shed
- 100-amp Electrical Service
- 3 TV Wall Jacks
- 10-year structural warranty

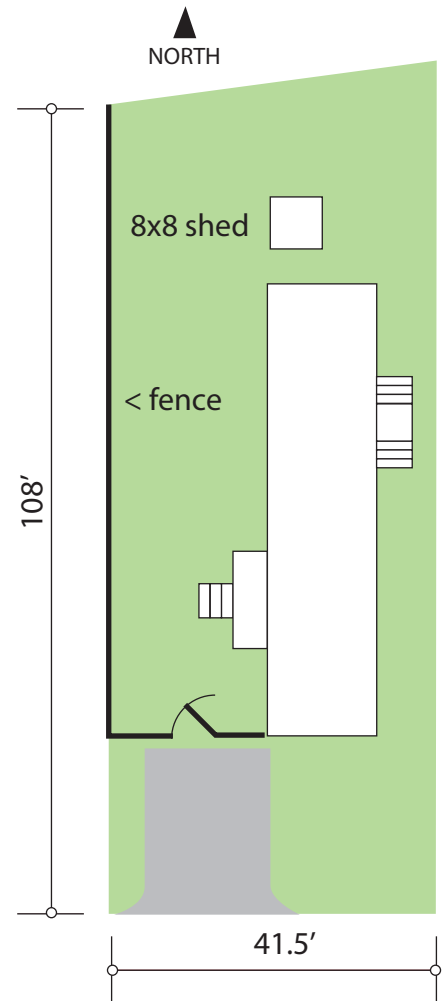
Your new manufactured home is ready to move in with off-street parking, outdoor lighting at each entrance, USPS mailbox at corner. Lot rent of \$225 includes water, sewer and trash disposal and garden shed.

LEA LANE PARK



AFFORDABLE LIVING
IN WESTCLIFFE,
COLORADO

Contact: Tom or Robyn Wallerich 719-783-0475



< LEA LANE >