

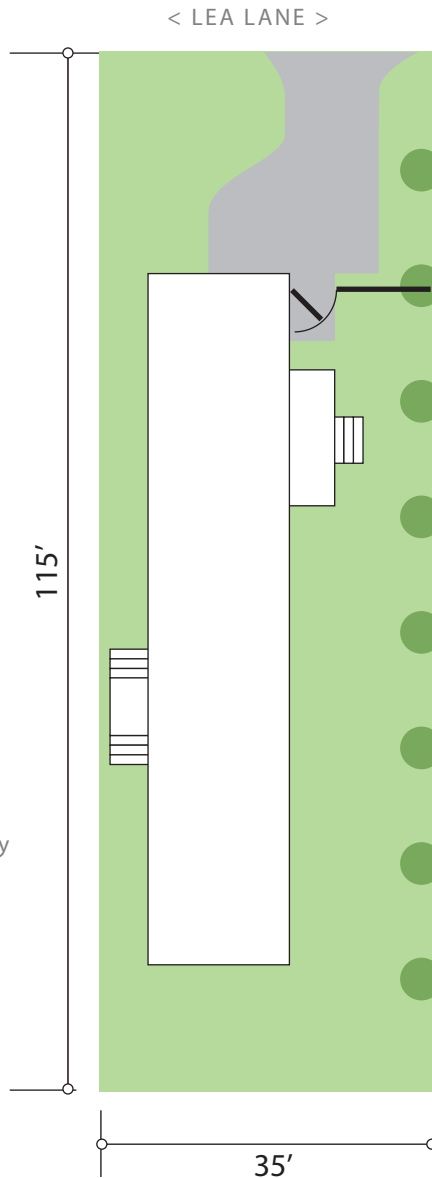
# 24 LEA LANE

Westcliffe, CO 81252

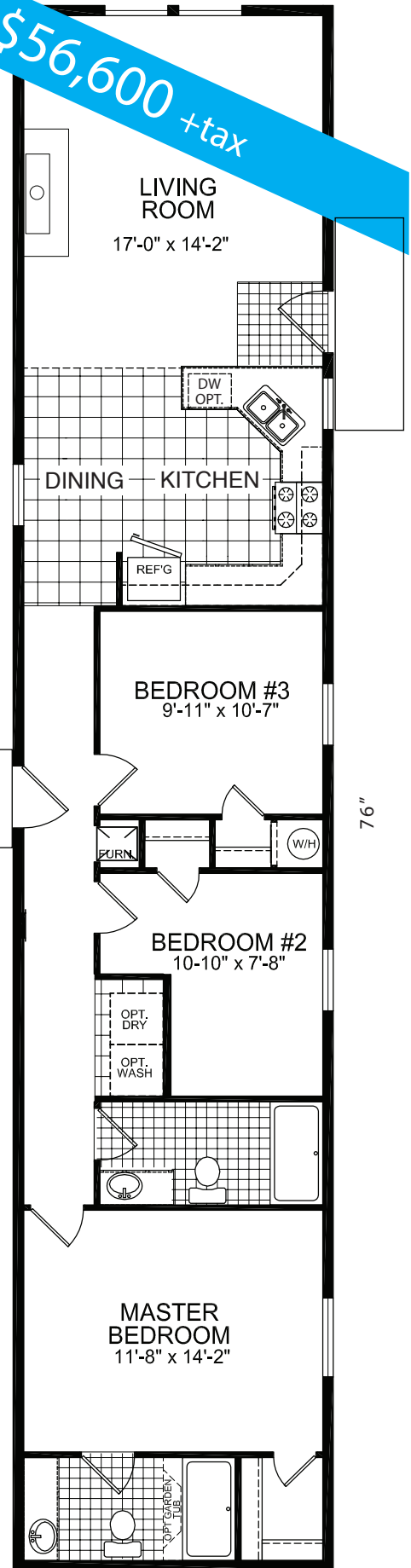
Your new manufactured home is ready to move in with off-street parking, privacy fencing, outdoor lighting at each entrance, USPS mailbox at corner. Lot rent of \$225 includes water, sewer and trash disposal.

## FEATURES

- Approx. 1,150 sq. ft. living
- Wood-burning Fireplace
- Three Bedrooms
- Master Walk-in Closet
- Two Baths
- One Piece Tub Showers
- Electric Range
- Refrigerator
- Central Heating
- R-19 Insulated 6" Walls
- R-28 Insulated Ceiling
- Plumbed for Laundry
- Exterior Frost-free Tap
- Exterior 110VAC outlet
- Painted Steps & Porch
- 100-amp Electrical Service
- 4 TV Wall Jacks
- 10-year structural warranty



**\$56,600 +tax**



## LEA LANE PARK



SAFE AND AFFORDABLE  
LIVING IN WESTCLIFFE,  
COLORADO

Contact: Tom or Robyn Wallerich 719-783-0475

15'-2"